



**PAVILION 360**  
**2025 CATALOG**

**INTENTIONALLY UNIQUE**  
**SPECIALLY FOR YOU**

## ABOUT US

Pavilion 360 is more than just an event rental and production company. We have the capabilities to transform any event into a lasting experience with our high quality products, creative in-house design team and affordable solutions. Our goal is to be the leader in the event industry while maintaining the best customer service and providing unmatched product and service selections to our clients.

We are comprised of event professionals that are innovative and forward thinking individuals. We are aligned in our desire to make a difference for our clients, our industry and our events. We have a track record of creating spectacular events through hospitality, entertainment, rentals, management, and operations. We recognize that no two events are the same and we strive to bring even more to your table with both products and services.

## TABLE OF CONTENTS

|                             |    |
|-----------------------------|----|
| LOUNGE FURNITURE .....      | 6  |
| BARs & SHELVEs .....        | 9  |
| TABLEs .....                | 12 |
| SEATING .....               | 15 |
| ROOM DIVIDERS .....         | 18 |
| PIPE & DRAPE .....          | 19 |
| FLOORING .....              | 20 |
| DECKs AND FOUNDATIONs ..... | 23 |
| STAGELINE STAGES .....      | 25 |
| TRUSSING .....              | 28 |
| CROWD CONTROL .....         | 30 |
| AUDIO & VISUAL .....        | 32 |
| SPECIAL EFFECTS .....       | 34 |
| LIVE ENTERTAINMENT .....    | 36 |
| SCENIC DECOR .....          | 40 |
| FOOD & BEVERAGE.....        | 42 |
| MISCELLANEOUS .....         | 43 |

## OUR SERVICES

### VENUE AND EVENT MANAGEMENT

- Live Events
- Virtual Events
- Hybrid Events & Live-stream Broadcasting
- Safety and Emergency Planning Operations
- Keynote Speaker Acquisition & Production
- Entertainment Talent Acquisition & Production
- Digital Marketing Campaigns
- Trade Show Planning
- Permanent Structure Management
- Ticketing Operations
- Event and Venue Traffic and Parking Planning

### AUDIO VISUAL AND RENTALS

- World-Class Audio, Video, and Lighting Systems
- Staging
- Video Production
- Projection-Mapping
- Animation Production
- Truss
- Live Event Design
- Virtual Reality Production
- Touch Experiences for Monitors, Walls and Tables
- Hologram Content Creation
- Event Furniture and Decor Rentals

### MEDIA AND CREATIVE SERVICES

- Creative Team Management
- Marketing Communications & Brand Messaging
- Motion Graphics
- 3D Modeling, Animation & Renderings
- Trade Show Exhibit Design & Development
- Event Game-ification & Game Design
- Website & Mobile App Development
- Social Media Content Curation
- Sponsorship Activation Plan
- Audience Acquisition Strategy
- User Experience Design & Journey
- Marketing Executive Planning & Management

### FOOD AND BEVERAGE

- Concessions
- Full Service Bar Operations
- Custom Food Menus
- Plated, Passed and Buffet Style Serving Structures
- Custom food and beverage programs for your attendance that best accommodates the traffic flow throughout your show





## LOUNGE FURNITURE

### SLEEK & MODERN

Our Mondrian Collection comes in both black and white leather and is a durably lightweight option with endless design arrangements to choose from. If you are looking for a sleek and modern design for your soiree, this collection will absolutely do the trick in bringing you that hot Miami nightclub lounge vibe.

# MONDRIAN COLLECTION

## LEATHER MODULAR FURNITURE



**MIDDLE**  
WHITE / BLACK



**CORNER**  
WHITE / BLACK



**INSIDE ROUND**  
WHITE / BLACK



**OUTSIDE ROUND**  
WHITE / BLACK



**DOT**  
WHITE / BLACK



**ARMLESS SOFA**  
BLACK GROUPING



**ARMLESS LOVESEAT**  
BLACK GROUPING



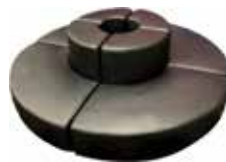
**SOFA**  
BLACK GROUPING



**LOVESEAT**  
BLACK GROUPING



**XL SOFA**  
BLACK GROUPING



**CIRCLE LOUNGE**  
BLACK GROUPING



**CUBE LOUNGE**  
BLACK GROUPING



**OVAL LOUNGE**  
BLACK GROUPING



**X LOUNGE**  
BLACK GROUPING



MODULAR



STAIN RESISTANT

**DREAM UP YOUR OWN CONFIGURATIONS!**

## COLETTE COLLECTION VERSATILE VELVET SEATING



**CORNER**  
IVORY OR CRIMSON



**OUTSIDE ROUND**  
IVORY OR CRIMSON



**DOT**  
IVORY OR CRIMSON



**LOVESEAT**  
IVORY OR CRIMSON  
GROUPING



**SOFA**  
IVORY OR CRIMSON  
GROUPING



**CRESCENT SOFA**  
IVORY/CRIMSON/PEWTER  
GROUPING

**MANY CONFIGURATIONS AVAILABLE**

## KINCAID COLLECTION LAVISH VELVET DINING FURNITURE



**CHAIR 16/18**  
IVORY OR EMERALD



**LOVESEAT 16/18**  
IVORY OR EMERALD



**SOFA 16/18**  
IVORY OR EMERALD



## BARS AND SHELVES

### RAISE THE BAR

Our Bars & Bar Backs comes in both straight and curved sections offering a variety of size and shape combinations. We have a selection of amazing bar backs to match each of our bars. All of our bars and bar backs have the capabilities of being illuminated using LED lighting. Also, every inch of each acrylic surface can be personalized with graphics, logos or monograms.



**6' AVENUE**  
GOLD AND CHROME



**AVENUE ARC**  
GOLD AND CHROME



**CRITERION**  
GOLD AND CHROME

**CUSTOM SURFACES OPTIONAL FOR AVENUE SERIES**



**4' MOBILE**  
WHITE



Product Image  
Coming Soon

**12' TRUSS BAR**  
CHROME  
CURVED OPTIONS  
AVAILABLE



**12' CIRCUS**  
RED/WHITE/GOLD

**24' CIRCUS ARC**  
RED/WHITE/GOLD



**8' PAVILION**  
BLACK



**ESSEX**  
GOLD AND CHROME



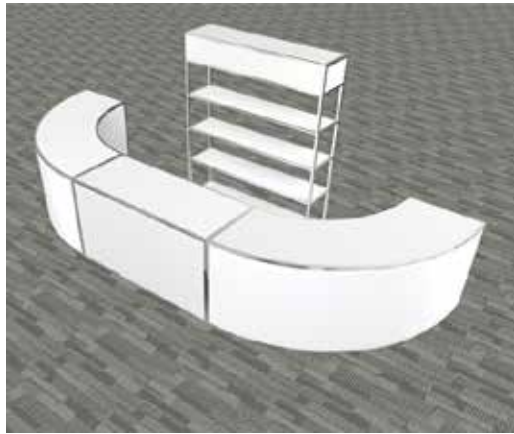
**GRAND**  
GOLD AND CHROME



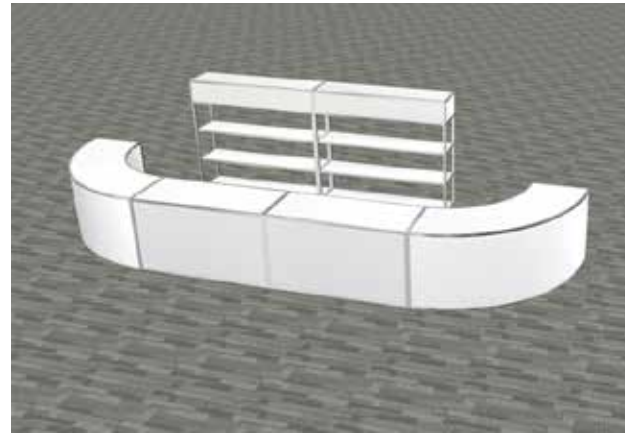
**GLAMOUR**  
GOLD AND CHROME



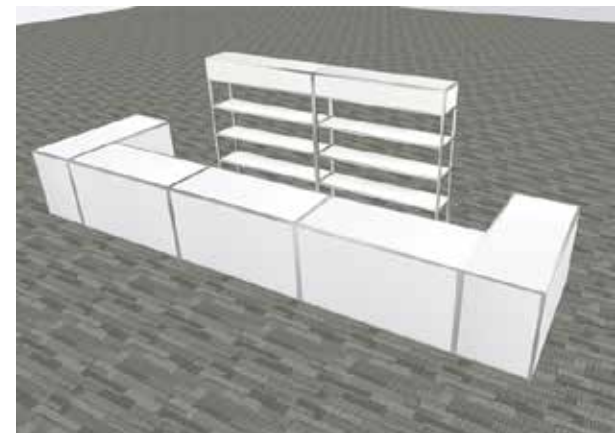
**S-ARC CAPSULE**  
GOLD AND CHROME



**M-ARC CAPSULE**  
GOLD AND CHROME



**L-ARC CAPSULE**  
GOLD AND CHROME



**XL U CAPSULE**  
GOLD AND CHROME



TABLES



## GATHER AROUND

Our Dining and Accent Tables comes a wide variety of shapes and sizes allowing endless layout capabilities. Whether you are hosting a cocktail party, need accent tables for a lounge seating section, or an array of dining tables for a formal sit down gathering, we have everything you need. Similar to our bar and bar backs, all of our tables can be completely personalized with graphics, logos or monograms.



**METROPOLITAN**  
GOLD AND CHROME



**BENTLEY 16**  
GOLD AND CHROME



**BENTLEY 30**  
GOLD AND CHROME



**BENTLEY 40**  
GOLD AND CHROME



**MERCER**  
GOLD AND CHROME



**4' LUMA**  
WHITE FROSTED



**MARSEILLES**  
GOLD AND CHROME  
30"/40" HEIGHTS



**GELATO 30/40**  
WHITE



**ELIA 30/40**  
WHITE



**COCKTAIL 30/40**  
WOOD



**BELLO**  
BRONZE



**BANQUET TABLE**  
6' AND 8'  
WOOD



**8' CONFERENCE TABLE**  
WOOD



**FOLDING TABLES**  
4' AND 6'  
PLASTIC



**6' PICNIC**  
WHITE  
QTY/12



**CIRCULAR DINING**  
48" / 60" / 72"  
WOOD



**HALF ROUND**  
WOOD



**7' SERPENTINE**  
WOOD



**3' BRI SQUARE**  
BLACK



**8' BRI ROUND**  
BLACK



**WHISKEY TABLE**  
WOOD



**WHISKEY BARRELL**  
WOOD



**8' RUSTIC FARM**  
PINE



## SEATING



## COME HAVE A SEAT

Our Chairs and Stools come in a few different materials, styles and colors offering a little bit of something for every event. Our chairs and stools include an ivory seat pad, however if you need something with more color, we have a wide variety of colorful spandex chair pad covers to choose that are guaranteed to match any theme.



**TITAN**  
WHITE / BLACK



**RESIN**  
WHITE / MAHOGANY



**PHOENIX**  
CLEAR / GOLD



**CHIAVARI**  
SILVER / MAHOGANY



**HAYWORTH**  
CHROME / GOLD



**HAWTHORN**  
CHROME / GOLD



**VIBE**  
CHROME / BLACK



**MIRAGE**  
CHROME



**NEO**  
BLACK



**GRAVITY**  
BLACK



**RUBY THRONE**  
RED & GOLD



**RUBY LOVESEAT**  
RED & GOLD



**RUBY LOVESEAT**  
RED & GOLD



**ONEIDA**  
BLACK



**RATTAN MID**  
BLACK



**RATTAN OTTOMAN**  
BLACK



**RATTAN CORNER**  
BLACK



**RIO**  
WROUGHT IRON



**RAVEN**  
WROUGHT IRON

## DIVIDE & CONQUER

These are excellent for dividing spaces as the name implies, however what makes these really shine is that they can be branded and personalized to match your theme and ambience Offer a printed guest list and seating chart to your formal event or add flare with the addition of uplighting. With our room dividers the possibilities are endless.



**ROOM DIVIDERS**



**8' BARCLAY WALL**  
GOLD AND CHROME



**6.5 HEDGE WALL**  
BOXWOOD



**3 WALL COMBO**  
INTERCHANGEABLE



## SHEER BRILLIANCE

Draperies are an amazing way to soften a room, design stage and head table backdrops, hide doors and objects, create flowing ceiling treatment designs and to provide unique and intricate designs in a variety of color options. With our design team the possibilities are nearly endless.



## PIPE & DRAPE

### CHOOSE FROM OUR MOST REQUESTED DRAPERY DESIGNS



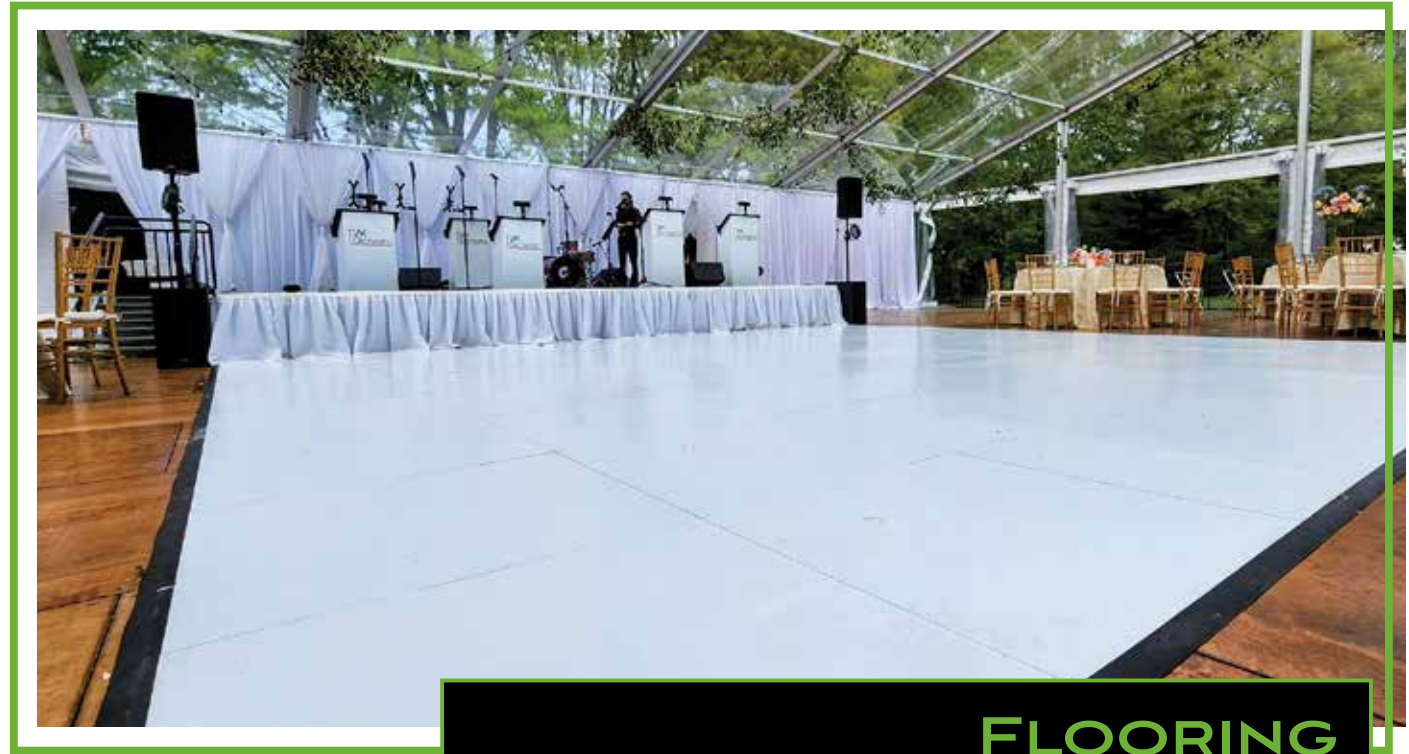
**POLY PREMIER**  
10' - 18' LENGTH



**SHEER (VOILE)**  
10' - 50' LENGTH

### WE RECOMMEND 4 DRAPE PANELS PER 10' WIDE SECTION

IF YOU DON'T SEE WHAT YOU ARE LOOKING FOR, CONTACT ONE OF OUR EVENT SPECIALISTS TO HELP YOU CREATE SOMETHING THAT IS A PERFECT FIT FOR YOUR EVENT



## FLOORING

### TIME TO CUT A RUG

A Dance Floor is where the toasts are given, first kisses are made, fun and unforgettable memories are shared, and where the party turns up another notch. Not to mention it's also one of the most photographed area of any event. We offer a variety of dance floor options sure to help liven the party for your next soiree.



# ILLUMINATED



3D INFINITY MIRROR  
MIRRORED  
VARIOUS SIZES

## ILLUMINATED DANCE FLOOR RENTS IN 2FT X 2FT PANELS

| TOTAL # OF GUESTS | TOTAL # OF DANCERS | SIZE OF DANCE FLOOR | TOTAL # OF PANELS |
|-------------------|--------------------|---------------------|-------------------|
| 60                | 20-30              | 8FT X 8FT           | 16                |
| 100               | 30-40              | 12FT X 12FT         | 36                |
| 125               | 35-50              | 12FT X 18FT         | 54                |
| 150               | 45-60              | 16FT X 16FT         | 64                |
| 250               | 75-100             | 20FT X 20FT         | 100               |

**INCLUDES TRIM**

SUB-FLOOR MAY NEED TO BE ADDED FOR OUTDOOR USE. ALL OUTDOOR USE MUST BE COVERED

(SETUP AND TEARDOWN NOT INCLUDED)



SLATE WHITE  
LAMINATE  
VARIOUS SIZES

# SNAPLOCK

## SNAPLOCK DANCE FLOORS RENTS IN 3FT X 3FT PANELS

| TOTAL # OF GUESTS | TOTAL # OF DANCERS | SIZE OF DANCE FLOOR | TOTAL # OF PANELS |
|-------------------|--------------------|---------------------|-------------------|
| 60                | 20-30              | 9FT X 9FT           | 9                 |
| 100               | 30-40              | 12FT X 12FT         | 16                |
| 125               | 35-50              | 12FT X 18FT         | 24                |
| 150               | 45-60              | 15FT X 15FT         | 25                |
| 200               | 60-80              | 18FT X 18FT         | 36                |
| 250               | 75-100             | 18FT X 24FT         | 48                |
| 300               | 90-120             | 24FT X 24FT         | 64                |
| 400               | 120-160            | 24FT X 36FT         | 96                |
| 500               | 150-200            | 36FT X 36FT         | 144               |

**INCLUDES TRIM**

SUB-FLOOR MAY NEED TO BE ADDED FOR OUTDOOR USE

ALL OUTDOOR USE MUST BE COVERED

(SETUP AND TEARDOWN NOT INCLUDED)



## DECKS AND FOUNDATIONS

### IT'S TIME TO RISE UP

Decks & Foundations have many uses when it comes to an event. They can simply be used to provide a stage riser for a presentation or performance, as subfloors to provide stable flooring and walking paths, as ADA compliant ramps, as temporary structural foundations, as bleacher structures for temporary seating, and to level out a space. Contact our sales team to find out the best solution for your next event.





**STAGE SKIRT**  
ADJUSTABLE HEIGHT  
WHITE & BLACK



**STAGE STAIRS**  
WOOD & METAL  
MULTIPLE STYLES



**STAGE RAILING**  
REQUIRED OVER 30" HEIGHT



**ADA RAMP**  
ADJUSTABLE HEIGHT  
1 IN RISE/ 1 FT RUN



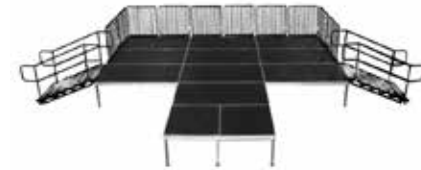
**STAGE DECK 44**  
ADJUSTABLE HEIGHT



**STAGE DECK 48**  
ADJUSTABLE HEIGHT



**RISERS**  
ADJUSTABLE HEIGHT



**PLATFORMS**  
ADJUSTABLE HEIGHT  
MULTIPLE STYLES



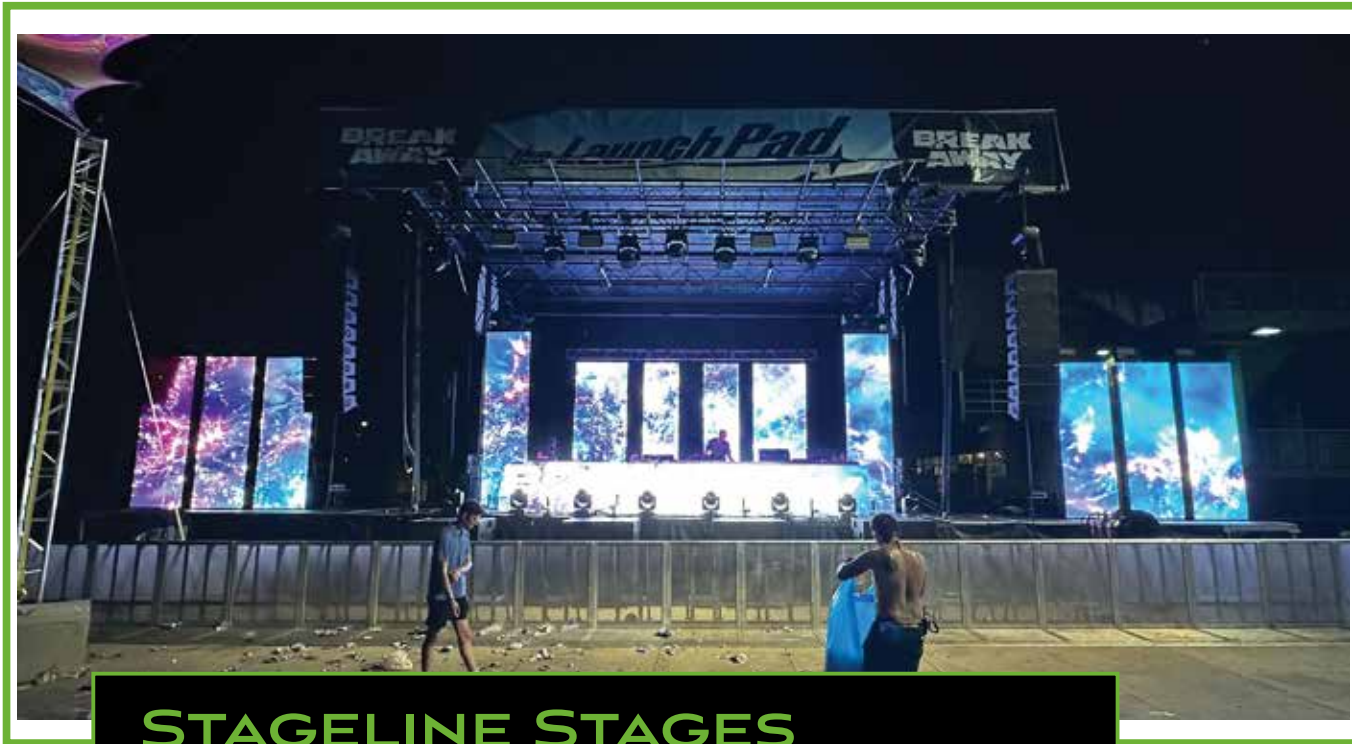
**BLEACHERS**  
METAL STRUCTURE  
MULTIPLE SIZES



**STRUCTURE FOUNDATIONS**  
BILJAX SYSTEM  
MULTIPLE SIZES & ELEVATIONS



**SUB-FLOORS**  
RESIN MOLDS  
MULTIPLE SIZES



## STAGELINE STAGES

### THE MAIN STAGE

Nothing compares to our stageline products. They are the most widely used stages in the live event industry and they save you both time and money. Most stage set-ups can be completed by two stagehands in under an hour and if you are looking for a full mobile production, the stageline trailers become your all in one full concert on wheels ready for a performance anytime, anywhere at a moments notice.

# STAGELINE SL100 & SL260



Position & level the trailer



Hydraulically deploy the floor and roof panels



Hang sound, lighting, banners, windwalls and sets from ground and deck level





Raise the roof with show equipment. Install stairs, gaurdrails and add accessories

SL100

## FLOOR

24' x 20' (7 m x 6 m)  
up to 40' x 28' (12 m x 8 m)  
with extension platforms

## SET-UP

 2 technicians\*  
 30 minutes

## WIND RESISTANCE

115 mph (185 km/h)  
without windwalls  
77 mph (123 km/h) with windwalls

## RIGGING

11,400 lb (5,190 kg)  
6' outriggers on each side /  
1,500 lb (680kg) per side

SL260

## FLOOR

32' x 24' (9.8 m x 7.3 m) up to  
56' x 32' (17.1m x 9.8m) with  
extension platforms

## SET-UP

 2 technicians\*  
 1 hour

## WIND RESISTANCE

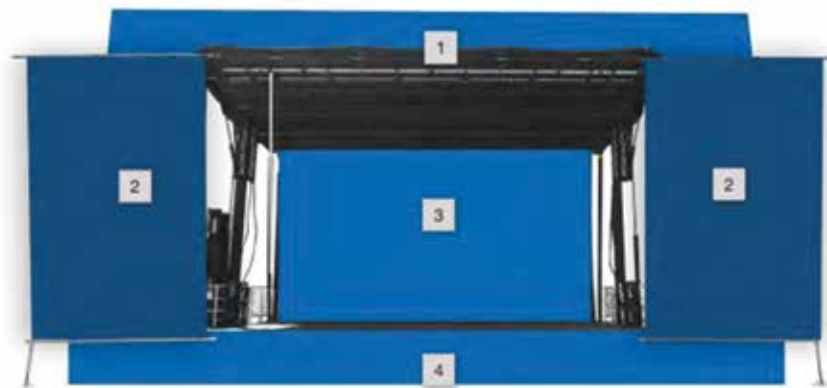
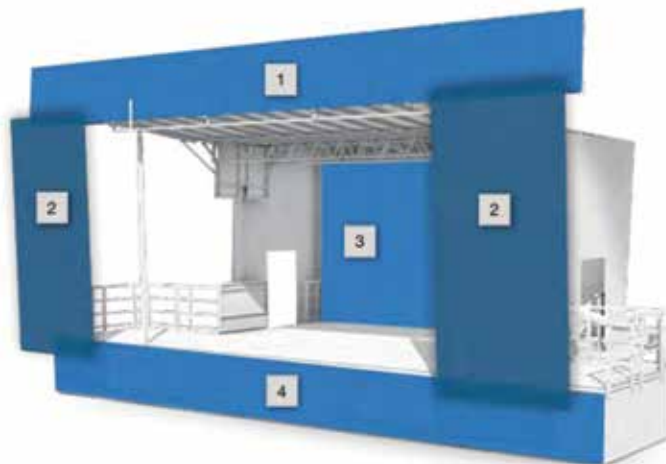
115 mph (185 km/h)  
without windwalls  
77 mph (123 km/h)  
with windwalls

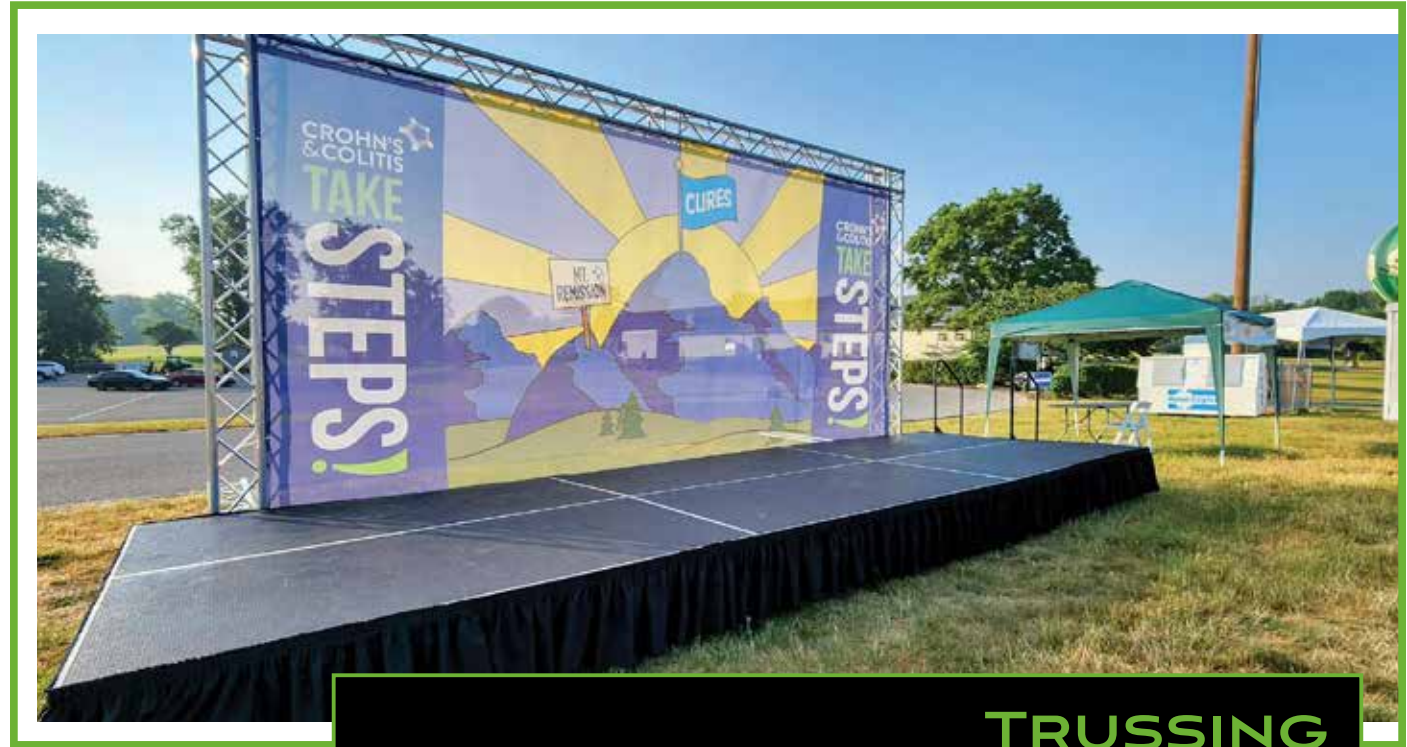
## RIGGING

18,500 lb (8,391 kg)

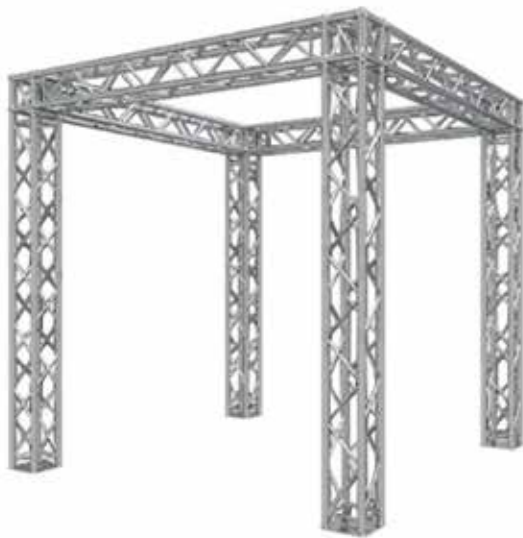
# SHOWCASE YOUR SPONSORS & EVENTS

ASK ABOUT OUR CUSTOM BANNER AND GRAPHICS PACKAGES





## TRUSSING

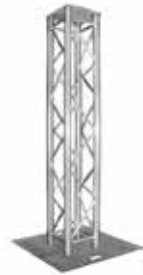


## GET CREATIVE

Trussing has the capabilities to bring so many amazing additions to your event design. Create the framework to your trade show booth design, create truss towers for lighting and signage. use it as rigging for hanging lighting, video displays, beautiful chandeliers, floral and much more,



**BOX TRUSS**  
ALUMINUM  
MULTIPLE SIZES



**TOWER**  
ALUMINUM  
MULTIPLE SIZES



**TRUSS COVERS**  
WHITE OR BLACK SPANDEX  
MULTIPLE SIZES



**ILLUMINATED**  
SPANDEX & UPLIGHT  
CHOOSE A COLOR



**CIRCLE**  
ALUMINUM  
MULTIPLE SIZES



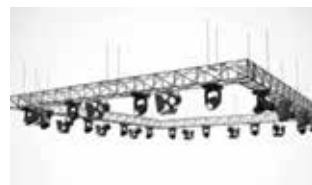
**GOAL POST**  
ALUMINUM  
MULTIPLE SIZES



**CUBE**  
ALUMINUM  
MULTIPLE STYLES



**RECTANGLE**  
ALUMINUM  
MULTIPLE SIZES



**SUSPENDED**  
ALUMINUM  
MULTIPLE STYLES

**CONTACT US TODAY IF YOU ARE  
IN NEED OF A CUSTOM  
STRUCTURE DESIGNED FOR  
YOUR EVENT**



## CROWD CONTROL

### BECOME A VIP

Whether your goal is to keep people out or make them feel like a VIP at your event, we have the right crowd control products to fit any occasion. Choose from various colors and styles of ropes and stanchions, steel concert & bike rack barricades, to temporary wall barricades.



**6' PICKET FENCE**  
WHITE



**BELT STANCHION**  
CHROME W/ BLUE BELT



**BELT STANCHION**  
BLACK W/ BLUE BELT



**FLAT TOP STANCHION**  
CHROME



**BALL TOP STANCHION**  
GOLD



**VELVET ROPES**  
MULTIPLE COLOR OPTIONS



**BIKE RACK BARRICADE**  
STEEL



**MOJO BARRICADE**  
STEEL



**BARRICADE FENCE**  
BLACK



**FIRE & SAFETY KIT**  
EXTINGUISHER/NO SMOKING/EXIT



**GOLF CART**  
VARIOUS COLORS



**AUDIO VISUAL**

## START THE SHOW

We come equipped with both high quality equipment, as well as highly skilled audio visual technicians. Whether you are in need of a small PA for a ceremony or cocktail, AV & lighting production for a speaking engagement or soiree, or a full blown concert production for a festival; our team is the right choice for all of your audio visual needs.





## AUDIO

WE DELIVER CRYSTAL-CLEAR SOUND WITH PROFESSIONAL-GRADE EQUIPMENT AND EXPERT TECHNICIANS, ENSURING EVERY WORD AND NOTE IS HEARD WITH PRECISION—NO MATTER THE VENUE SIZE OR EVENT TYPE.



## VIDEO

FROM HIGH-DEFINITION DISPLAYS TO SEAMLESS LIVE STREAMING, WE PROVIDE STUNNING VIDEO SOLUTIONS THAT ENGAGE AUDIENCES AND BRING YOUR VISION TO LIFE WITH CLARITY, COLOR ACCURACY, AND DYNAMIC MOTION.



## LIGHTING

OUR CUSTOMIZED LIGHTING DESIGNS ELEVATE THE ATMOSPHERE AND FOCUS ATTENTION WHERE IT MATTERS. FROM DRAMATIC STAGE LOOKS TO SUBTLE AMBIANCE, WE SHAPE EXPERIENCES WITH INTELLIGENT, VERSATILE LIGHTING SYSTEMS.



## STAGING

WE OFFER SCALABLE, SAFE, AND VISUALLY STRIKING STAGING SOLUTIONS, TAILORED TO FIT ANY SPACE OR THEME. WHETHER INDOOR OR OUTDOOR, WE ENSURE A POLISHED, PROFESSIONAL EVENT FOUNDATION.



## TRUSSING & RIGGING

WE PROVIDE SAFE, ADAPTABLE TRUSSING AND RIGGING SOLUTIONS TO SUPPORT LIGHTING, VIDEO, AND DÉCOR. OUR EXPERT TEAM ENSURES EVERY STRUCTURE IS SECURE, EFFICIENT, AND SEAMLESSLY INTEGRATED INTO YOUR EVENT.



## DESIGN

OUR CREATIVE TEAM COLLABORATES WITH YOU TO DESIGN COHESIVE AV ENVIRONMENTS. FROM CONCEPT TO EXECUTION, WE CRAFT TAILORED SOLUTIONS THAT REFLECT YOUR BRAND, MESSAGE, AND EVENT GOALS.



## SPECIAL EFFECTS

### BLOW THEIR MIND

We are the team to call when you are wanting to elevate your event to the next level. The sky is the limit with our wide array of stimulating special effects. We offer CO2, foam & confetti cannons, Cold Spark indoor fireworks, digital & 360 photo booths, fog machines, mirror balls and much more.





**CO2 GUN**  
INCLUDES CO<sub>2</sub> TANK



**CO2 CANNON**  
INCLUDES CO<sub>2</sub> TANK



**FOAM CANNON**  
REQUIRES WATER HOOKUP



**CONFETTI CANNON**  
INCLUDES TISSUE CONFETTI



**COLD SPARK**  
INDOOR / OUTDOOR USE



**FOG HAZE**  
INDOOR / OUTDOOR USE



**MIRROR BALLOONS**  
MULTIPLE SIZES



**40" MIRROR BALL**  
INCLUDES MOTOR



**DRY ICE**  
INDOOR / OUTDOOR USE



**VIRTUAL BOOTH**  
INSTANTLY CAPTURE AND SHARE



**DIGITAL BOOTH**  
INSTANTLY CAPTURE AND SHARE



**360 BOOTH**  
INSTANTLY CAPTURE AND SHARE



## LIVE ENTERTAINMENT



## PUT ON A SHOW

Our team can take a huge load off of your shoulders by managing all of your live entertainment needs for your next concert, soiree, gala, festival, block party, wedding etc. We are able to provide local, regional and national performers, musicians, djs, and celebrities from all over the globe.





**JUGGLERS**

THEMED COSTUMES  
THEMED COSTUMES  
2 HOUR SERVICE BLOCKS



**STILT WALKERS**

THEMED COSTUMES  
2 HOUR SERVICE BLOCKS



**AERIAL ACTS**

REQUIRES RIGGING  
2-HOUR SERVICE BLOCKS



**STROLLING DECOR**

STROLLING FOOD & DRINK SERVICE  
2 HOUR SERVICE BLOCKS



**FIRE PERFORMER**

OUTDOOR ONLY  
2 HOUR SERVICE BLOCKS



**LIVING STATUE**

THEMED COSTUMES  
2 HOUR SERVICE BLOCKS



**MUSICIAN / DJ**

CHOOSE YOUR PERFORMER



**CELEBRITY APPEARANCE**

CHOOSE YOUR CELEBRITY



**COMEDIANS**

CHOOSE YOUR PERFORMER



**KEYNOTE SPEAKER**

CHOOSE YOUR SPEAKER



**LED DANCER**

LED COSTUMES  
CHOOSE YOUR PERFORMER



**THEMED ENTERTAINERS**

CHOOSE YOUR THEME  
2 HOUR SERVICE BLOCKS



## FOOD & BEVERAGE

### ON THE ROCKS

On-top of our food & beverage services, we also offer food & beverage equipment rentals to go along with it. From propane grills & food stations, to ice tubs & beverage coolers. We are prepared to handle any event whether it's a small gathering with 300 guests or a large festival with 3000 guests, we got you covered.





**DUAL DOOR FRIDGE**  
7.5' TALL & 6' WIDE



**RED BULL COOLER**  
TRIPLE SHELF



**4' DEEP FREEZE**  
WHITE



**COCKTAIL STATION**  
ICE CHEST & SPEED RAIL



**PORTABLE ICE TUB**  
64 QUART



**LARGE ICE TUB**  
100 GALLON



**PROPANE GRILL**  
INCLUDES 2 PROPANE TANKS



## SCENIC DECOR

## ENHANCE THE VIBE

Our in-house design team is made up of highly skilled designers, fabricators, and woodworkers ready to create anything your heart can dream up....Or find on Pinterest lol. We are always creating new pieces to add to our collection, however if you don't see what you like, contact us to create something unique just for you.





STAGE FRONTS



PHOTO OP DISPLAYS



SHELF DISPLAYS



SILK PLANTS



3D PROPS



CUSTOM SIGNS



3D LETTERS



ANNIVERSARY WALL



MAGAZINE BOX



HEDGE PICTURE FRAME



PICTURE FRAME



SCENIC DISPLAYS

## FOOD & BEVERAGE SERVICES

### INDUSTRY LEADERS

We are an industry leader in beverage management for special events throughout Indiana. We provide first in class beverage experiences at corporate events, festivals, sporting events, clubs & private events. Our years of experience, highly trained staff, attention to detail & customizable services are unrivaled in the industry.

#### SERVICE TYPES

- HOSTED BAR
- CASH BAR
- DRINK TICKETS
- SPECIALTY COCKTAILS
- TASTING STATIONS
- CONSUMPTION

#### OUR TOP PRIORITIES FOR OUR PARTNERS INCLUDE:

- EXECUTING THE BEVERAGE VISION OF OUR CLIENTS
- ADD LOCAL FLAVOR TO THE FOOD & BEVERAGE OPTIONS
- COMPLIANCE WITH CITY & STATE LIQUOR AUTHORITY
- LIQUOR & GENERAL LIABILITY INSURANCE
- REMOVING THE RESPONSIBILITY OF ALCOHOL LIABILITY FROM CLIENT AND VENUE
- CREATING A PROFITABLE PROGRAM FOR BOTH PARTIES
- DESIGN & BUILD INFRASTRUCTURE SPECIFIC TO YOUR FESTIVAL OR EVENT



## MISCELLANEOUS

### KEEP IT RANDOM

We offer such a vast amount of products and services and the list just keeps growing year after year. Here are a few we wanted to make sure to include.





**CONCESSION**  
MULTIPLE OPTIONS



**OUTDOOR GAMES**  
MULTIPLE OPTIONS



**FANS**  
5' PEDESTAL



**PATIO HEATERS**  
INCLUDES PROPANE TANK



**UMBRELLAS**  
WHITE



**LECTERNS**  
MULTIPLE OPTIONS



**BEVERAGE SERVICE**  
ASK FOR DETAILS



**CATERING SERVICE**  
ASK FOR DETAILS



**EVENT MANAGEMENT**  
ASK FOR DETAILS



**TABLE TOP DECOR**  
MULTIPLE OPTIONS



**BRANDING**  
ASK FOR DETAILS



**TENTS**  
MULTIPLE OPTIONS

PAVI | ION  
360°  
EVENT SOLUTIONS